

and has soils indicative of wet conditions” Wetlands are commonly referred to as “swamps”, “marshes” or “bogs”. The town of Grover has numerous small swamps and bogs. See attached Town of Grover Wisconsin DNR Wetlands map for details.

### **WOODLANDS**

The town of Grover has 33,793 acres of Chequamegon-Nicolet National Forest land. There is approximately 1823.40 acres of managed forest land and 38.79 acres of forest crop land are privately owned in the township. See attached Town of Grover Forested Land and Grover Township Public Forestland Maps for details. The woodlands provide habitat for a variety of plants and animals. Woodlands provide recreational opportunities and timber production.

### **NON-METALLIC MINING SITES**

Non Metallic Mineral Resources are sand and gravel. The town of Grover has two open non-metallic mining sites-the James Peterson & Sons gravel pit and the United States Forest Service gravel pit.

### **AGRICULTURE**

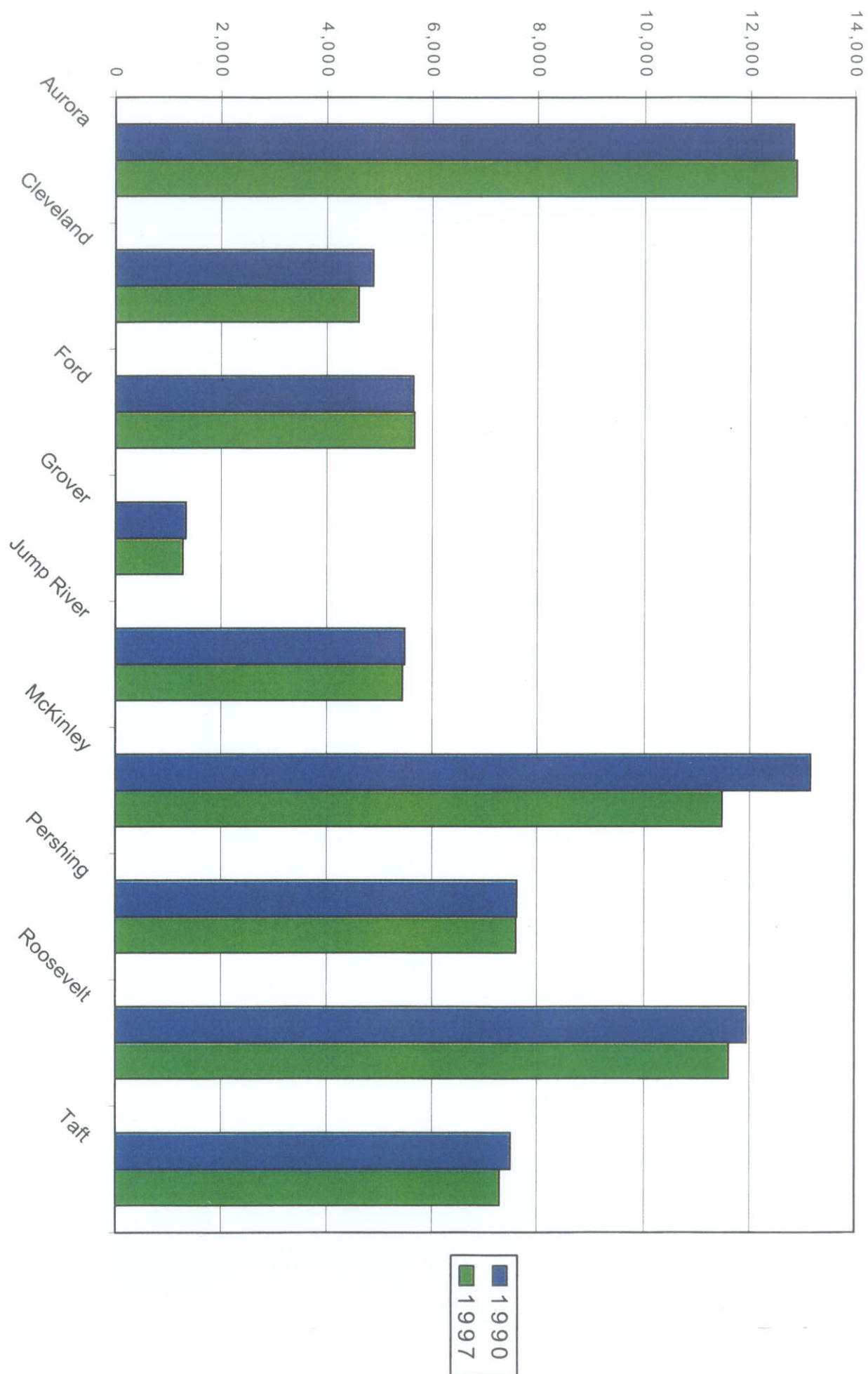
The agricultural industry, including: forestry, dairy, beef, sheep, crops and hobby farms is important to the residents of the town of Grover. It is a factor in the economic well being and quality of life for local residents. The town of Grover is encouraged to help protect and promote sound agricultural practices in the town.

According to 2000 Census information, land classified as farmland in Taylor County increased slightly from 254,510 acres in 1997 to 257,143 acres in 2002. During the same time period, (1997 to 2002), the number of farms declined from 1091 to 1056. The average size farm in 2002 was 244 acres, up 5% from 1997. In 2005 slightly over 40% of all farmland in Taylor County were harvested crop fields. Another 7% was pasture land and the remaining 53% of farmland was idle, woodlands or farmsteads.

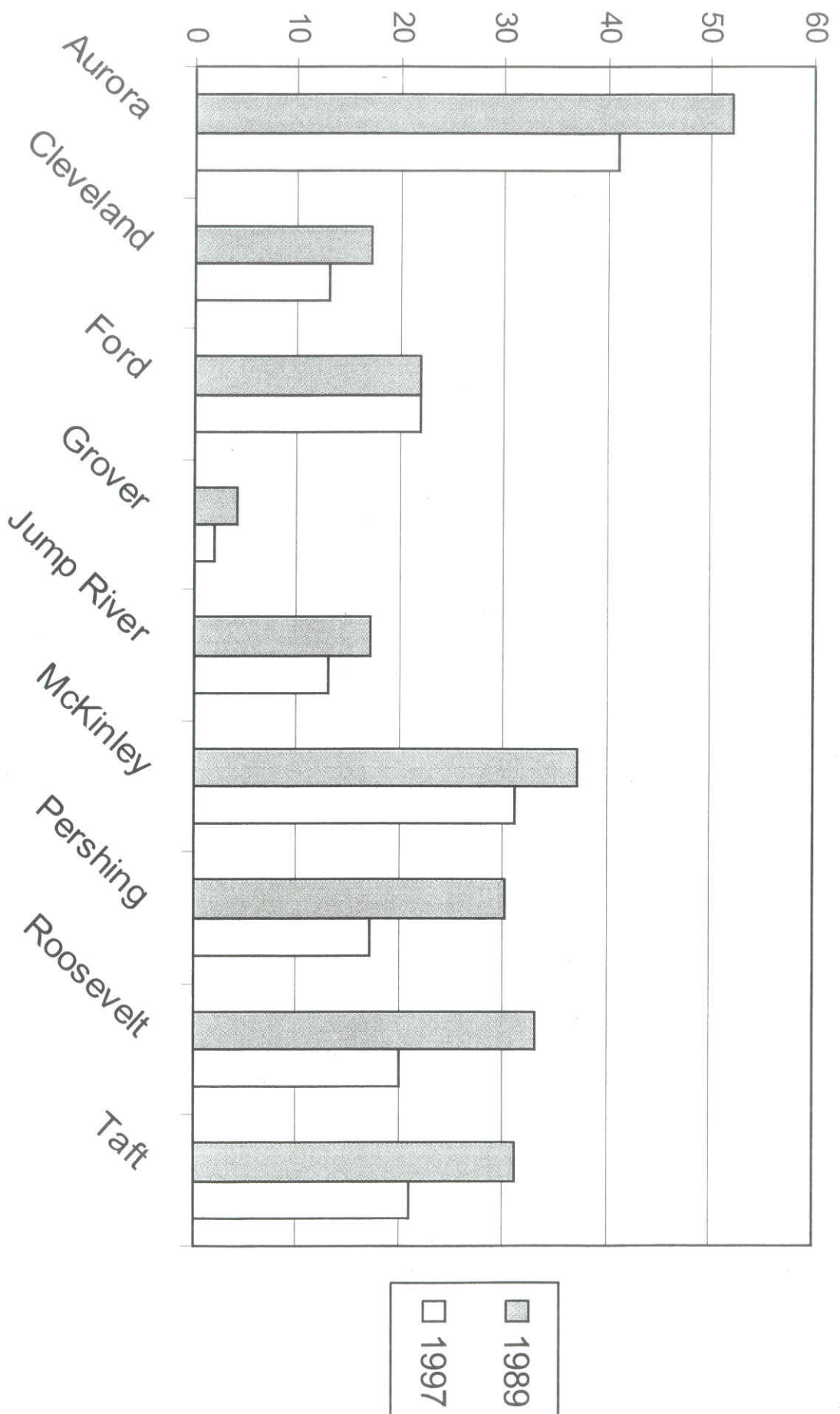
There were approximately 1000 acres of farmland on the tax rolls in the town of Grover in 1990 and the acreage had only slightly decreased in 1997. See attached Acres of Farmland on Tax Rolls for Taylor County chart for details.

The trend has been a decrease in dairy operations. The past couple of years have seen an increase in crop farming. This trend may continue due to financial and economic conditions. See attached Estimated Number of Dairy Farms for Taylor County chart for details. See attached Town of Grover Agricultural Land cover map for details. Attached are two reports sent by the town of Grover assessor to the town clerk on 6-16-53 and 5-11-56. As a historical comparison, these reports give a summary of the farm acreages of crops planted in the years 1953 and 1956.

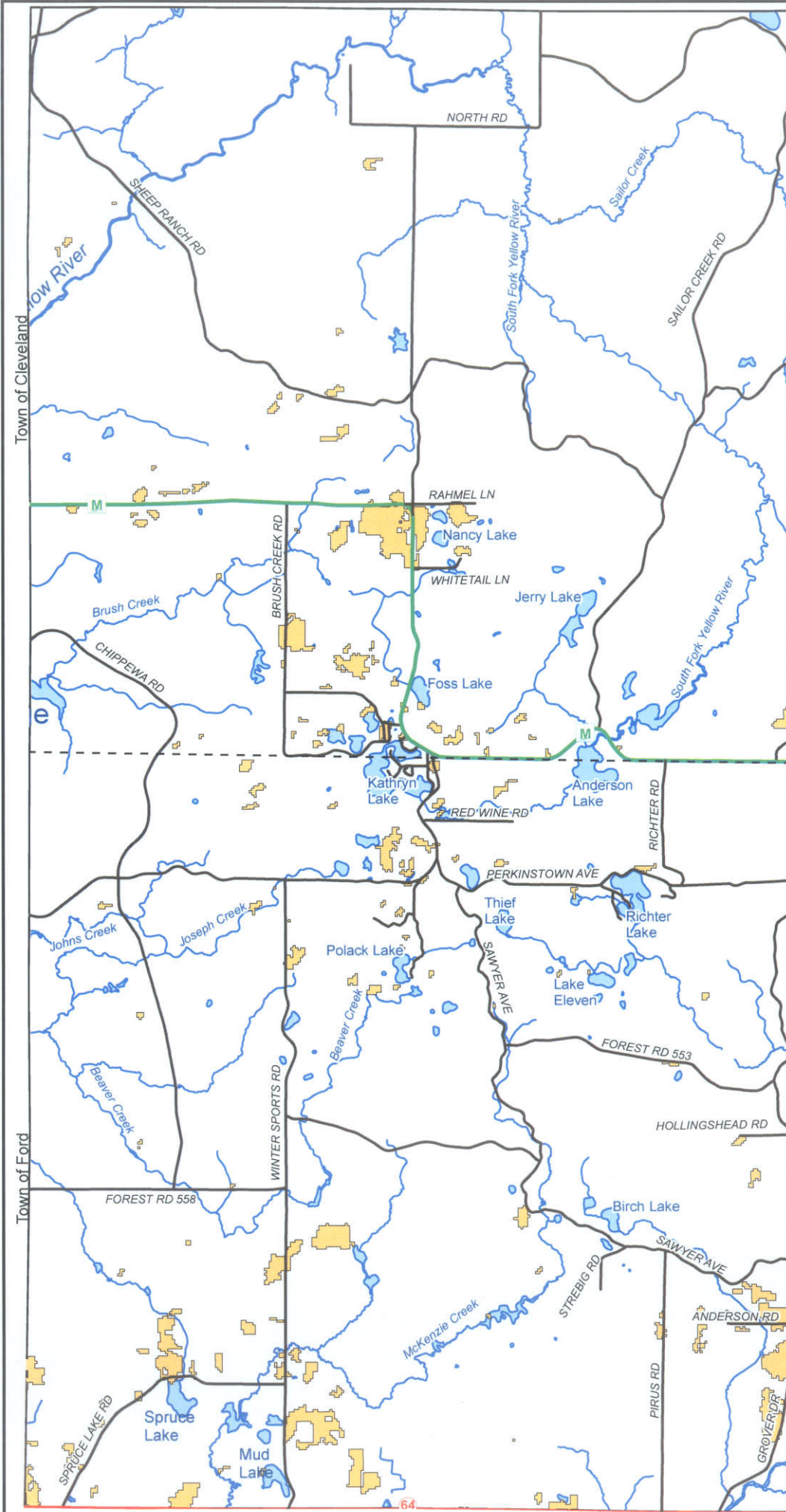
# Acres of Farmland on Tax Rolls (Including Improvements) by Selected Municipalities, Taylor County Wisconsin: 1990 & 1997



# Estimated Number of Dairy Farms by Selected Municipalities, Taylor County, Wisconsin: 1989 & 1997



# Town of Grover Agricultural Land



**Legend**

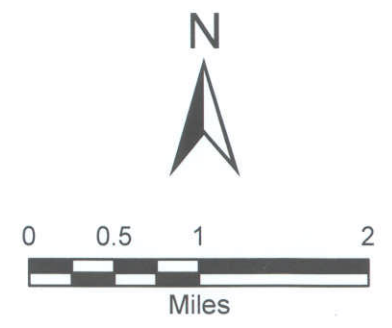
**Agricultural Landcover**

- Herbaceous/Field Crops

**Roads**

- COUNTY
- LOCAL
- STATE

North Grover (T32N R2W)  
South Grover (T31N R2W)



Medford PSR  
(Place)

6/16/53  
(Date)

You will find below a summary of my report to the Wisconsin Department of Agriculture on the farm acreages of crops planted in 1953, etc., in this assessment district as required by law.

1. Acres of land in farm. . . . .	4664
2. Acres of corn. . . . .	15 1/2
3. Acres in potatoes. . . . .	0
4. Acres in soybeans for all purposes . . . . .	168
5. Acres in oats for grain. . . . .	6
6. Acres in barley for grain. . . . .	0
7. Acres in rye for grain . . . . .	0
8. Acres in winter wheat for grain. . . . .	0
9. Acres in spring wheat for grain. . . . .	0
10. Acres in clover and timothy and mixtures . . . . .	596
11. Acres in alfalfa and alfalfa mixtures. . . . .	44
12. Acres in other tame hay. . . . .	1
13. Acres in tobacco . . . . .	0
14. Acres in flax . . . . .	0
15. Acres in cabbage . . . . .	0
16. Acres in cucumbers . . . . .	15 1/8
17. Acres in carrots . . . . .	0
18. Acres in canning peas. . . . .	0
19. Acres in sweet corn for canning. . . . .	0
20. Acres in snap beans for canning. . . . .	1 1/2
21. Acres in lima beans for canning. . . . .	0
22. Acres in beets for canning. . . . .	0
23. Acres of corn cut for silage . . . . .	41 1/2
24. Acres of hay land cut for silage--first crop . . . . .	12
25. Acres of hay land cut for silage--second crop. . . . .	0
26. Acres in wild hay harvested last year (1952) . . . . .	0
27. Bushels of buckwheat harvested last year (1952). . . . .	0
28. Bushels of red clover seed harvested last year (1952). . . . .	0
29. Bushels of alsike, white, and other clover seed last year (1952) . . . . .	0
30. Bushels of timothy seed harvested last year (1952) . . . . .	7
31. Bushels of alfalfa seed harvested last year (1952) . . . . .	0
32. Tons of hay sold (1952 crop) . . . . .	26
33. Number of milk cows on farm. . . . .	317
34. Number of brood sows for spring farrowing. . . . .	1
35. Number of beef type cattle and calves for breeding stock . . . . .	2
36. Number of beef type cattle and calves for slaughter or feeders . . . . .	0
37. Number of all chickens on this farm. . . . .	474
38. Number of people living on this farm . . . . .	154

Yours very truly

Rudolph Rust  
(Assessor)

County of Taylor Town (Village or City) of Grover

THIS REPORT IS TO BE SENT TO THE TOWN CLERK

Medford Wis P.S.R. May 11-56  
 (Place) (Date)

You will find below a summary of my report to the Wisconsin Department of Agriculture on the farm acreages of crops planted in 1956, etc., in this assessment district as required by law.

1. Acres of land in farm . . . . .	<u>4,487</u>
2. Acres of corn . . . . .	<u>77</u>
3. Acres in potatoes . . . . .	<u>          </u>
4. Acres in soybeans for all purposes . . . . .	<u>          </u>
5. Acres in oats for grain. . . . .	<u>185</u>
6. Acres in barley for grain . . . . .	<u>          </u>
7. Acres in rye for grain . . . . .	<u>          </u>
8. Acres in winter wheat for grain . . . . .	<u>          </u>
9. Acres in spring wheat for grain . . . . .	<u>          </u>
10. Acres in clover and timothy hay and mixtures . . . . .	<u>125</u>
11. Acres in alfalfa hay and alfalfa hay mixtures . . . . .	<u>30</u>
12. Acres in other tame hay . . . . .	<u>          </u>
13. Acres in tobacco . . . . .	<u>          </u>
14. Acres in onions (big or dry onions) . . . . .	<u>          </u>
15. Acres in cabbage . . . . .	<u>          </u>
16. Acres in cucumbers . . . . .	<u>          </u>
17. Acres in carrots . . . . .	<u>          </u>
18. Acres in canning peas. . . . .	<u>          </u>
19. Acres in sweet corn for canning . . . . .	<u>          </u>
20. Acres in snap beans for canning . . . . .	<u>2</u>
21. Acres in lima beans for canning . . . . .	<u>          </u>
22. Acres in beets for canning . . . . .	<u>          </u>
23. Acres in corn cut for silage (1955) . . . . .	<u>24</u>
24. Acres hay land cut for silage (1955). . . . .	<u>          </u>
25. Acres of potatoes harvested before October 1, 1955 . . . . .	<u>          </u>
26. Acres of potatoes harvested after October 1, 1955. . . . .	<u>          </u>
27. Bushels cleaned red clover seed harvested last year (1955) . . . . .	<u>16</u>
28. Bushels cleaned alsike, white, and other clover seed harvested last year (1955). . . . .	<u>          </u>
29. Bushels cleaned timothy seed harvested last year (1955). . . . .	<u>          </u>
30. Bushels cleaned alfalfa seed harvested last year (1955) . . . . .	<u>          </u>
31. Number of milk cows on farm. . . . .	<u>329</u>
32. Number of brood sows for spring farrowing . . . . .	<u>4</u>
33. Number of people living on this farm . . . . .	<u>126</u>

Yours very truly,

Roy H. Armstrong  
 (Assessor)

County of Taylor Town (Village or City) of Grover

The Taylor County Farmland Preservation Plan was adopted in 1981. In 2005, Taylor County had 14,747 acres enrolled in 103 farmland preservation agreements.

There are several agricultural resource programs in Taylor County:

**Wisconsin Farmland Preservation Credit Program-** combines land use planning and soil conservation practices that help farmers with property tax relief. You must own 35 acres or more to participate with the program.

**Managed Forest Lands and Private Forest Crop Programs-** designed to reduce the tax burden on forested crop land for farmer and land owners in the township and provide marketable timber.

### **ECONOMIC DEVELOPMENT**

Economic development is the type of business activity within the township. The town of Grover is rural and previously agriculture and forestry were the primary sources of income for the residents. Business activity within the township include a bird game farm, an auto body repair shop, a tavern, gravel pit operations, a convenience store/gasoline station, Emu ranch and home businesses.

#### **Economic Development Programs:**

Department of Tourism  
UW Extension  
Department of Workforce Development  
USDA Service Center  
Wisconsin DNR  
US Forest Service

### **UTILITIES, GOVERNMENT AND COMMUNITY FACILITIES**

The Grover Town Hall is located on Second street in the township. It was built in 1892. It has a jail located behind it that was built at approximately the same time.

The Perkinstown Community Cemetery is nestled among towering pines and maples. The new addition rests in the adjacent clearing.

The Perkinstown Park is located adjacent to the Perkinstown Community Cemetery near the Kathryn Lake boat launch on Winter Sports Road. Electricity is available for use in the pavilion that was constructed in August 2008. The town of Grover's pavilion is available to rent. The Perkinstown Ski and Snowshoe Trails are located off Winter Sports Road in the town of Grover. The Perkinstown Winter Sports Area is also located in the town of Grover and is owned and operated by Taylor County. It offers family winter activities featuring tubing, snowshoeing, cross-country skiing and food concessions. It is located on Winter Sports Road. See attached Perkinstown Ski and Snowshoe Trails map for details.