

and has soils indicative of wet conditions” Wetlands are commonly referred to as “swamps”, “marshes” or “bogs”. The town of Grover has numerous small swamps and bogs. See attached Town of Grover Wisconsin DNR Wetlands map for details.

WOODLANDS

The town of Grover has 33,793 acres of Chequamegon-Nicolet National Forest land. There is approximately 1823.40 acres of managed forest land and 38.79 acres of forest crop land are privately owned in the township. See attached Town of Grover Forested Land and Grover Township Public Forestland Maps for details. The woodlands provide habitat for a variety of plants and animals. Woodlands provide recreational opportunities and timber production.

NON-METALLIC MINING SITES

Non Metallic Mineral Resources are sand and gravel. The town of Grover has two open non-metallic mining sites-the James Peterson & Sons gravel pit and the United States Forest Service gravel pit.

AGRICULTURE

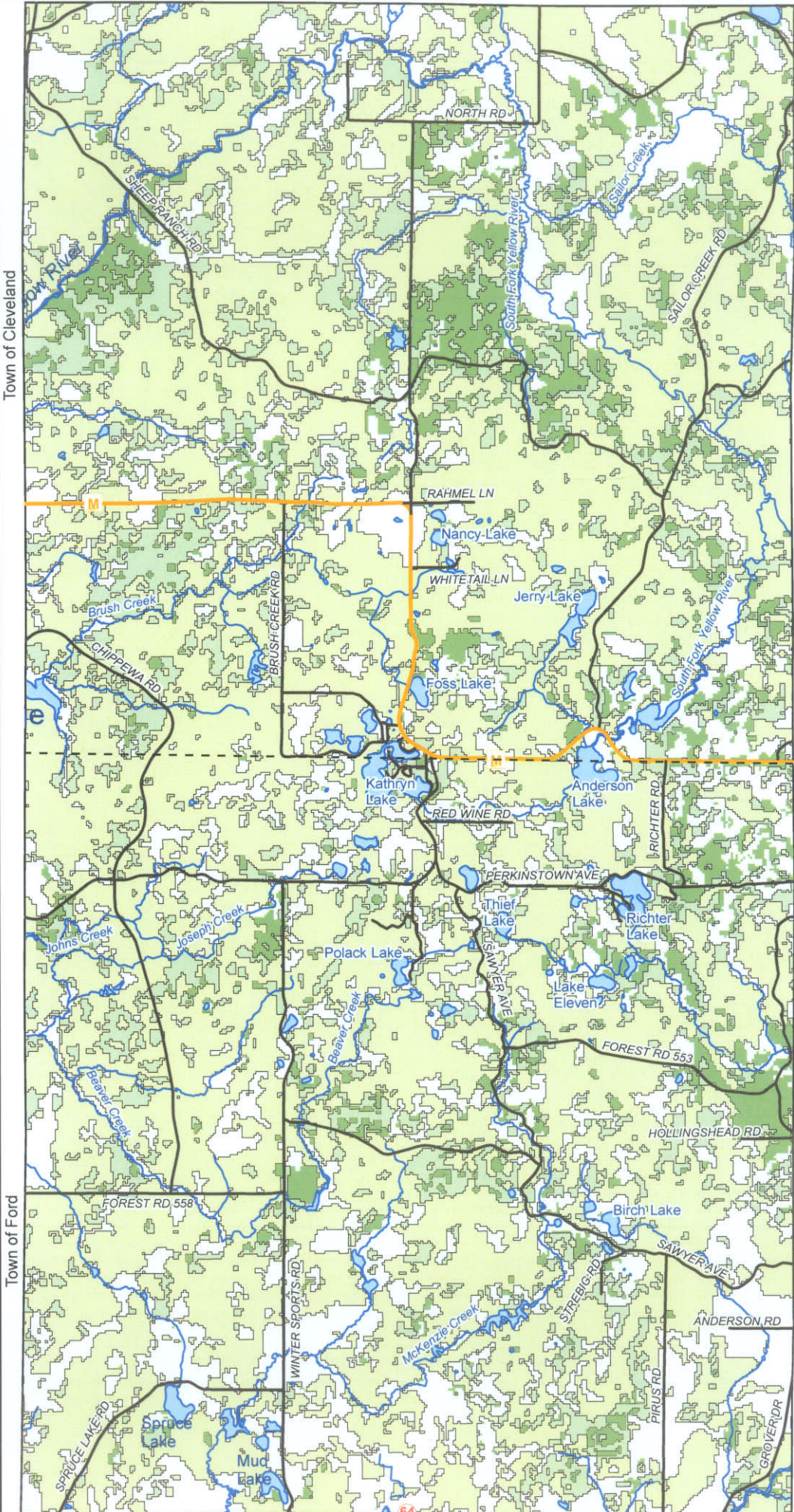
The agricultural industry, including: forestry, dairy, beef, sheep, crops and hobby farms is important to the residents of the town of Grover. It is a factor in the economic well being and quality of life for local residents. The town of Grover is encouraged to help protect and promote sound agricultural practices in the town.

According to 2000 Census information, land classified as farmland in Taylor County increased slightly from 254,510 acres in 1997 to 257,143 acres in 2002. During the same time period, (1997 to 2002), the number of farms declined from 1091 to 1056. The average size farm in 2002 was 244 acres, up 5% from 1997. In 2005 slightly over 40% of all farmland in Taylor County were harvested crop fields. Another 7% was pasture land and the remaining 53% of farmland was idle, woodlands or farmsteads.

There were approximately 1000 acres of farmland on the tax rolls in the town of Grover in 1990 and the acreage had only slightly decreased in 1997. See attached Acres of Farmland on Tax Rolls for Taylor County chart for details.




The trend has been a decrease in dairy operations. The past couple of years have seen an increase in crop farming. This trend may continue due to financial and economic conditions. See attached Estimated Number of Dairy Farms for Taylor County chart for details. See attached Town of Grover Agricultural Land cover map for details. Attached are two reports sent by the town of Grover assessor to the town clerk on 6-16-53 and 5-11-56. As a historical comparison, these reports give a summary of the farm acreages of crops planted in the years 1953 and 1956.

Town of Grover Forested Land






Legend

Forest Types

-  broad-leaved deciduous
-  coniferous
-  mixed deciduous/coniferous

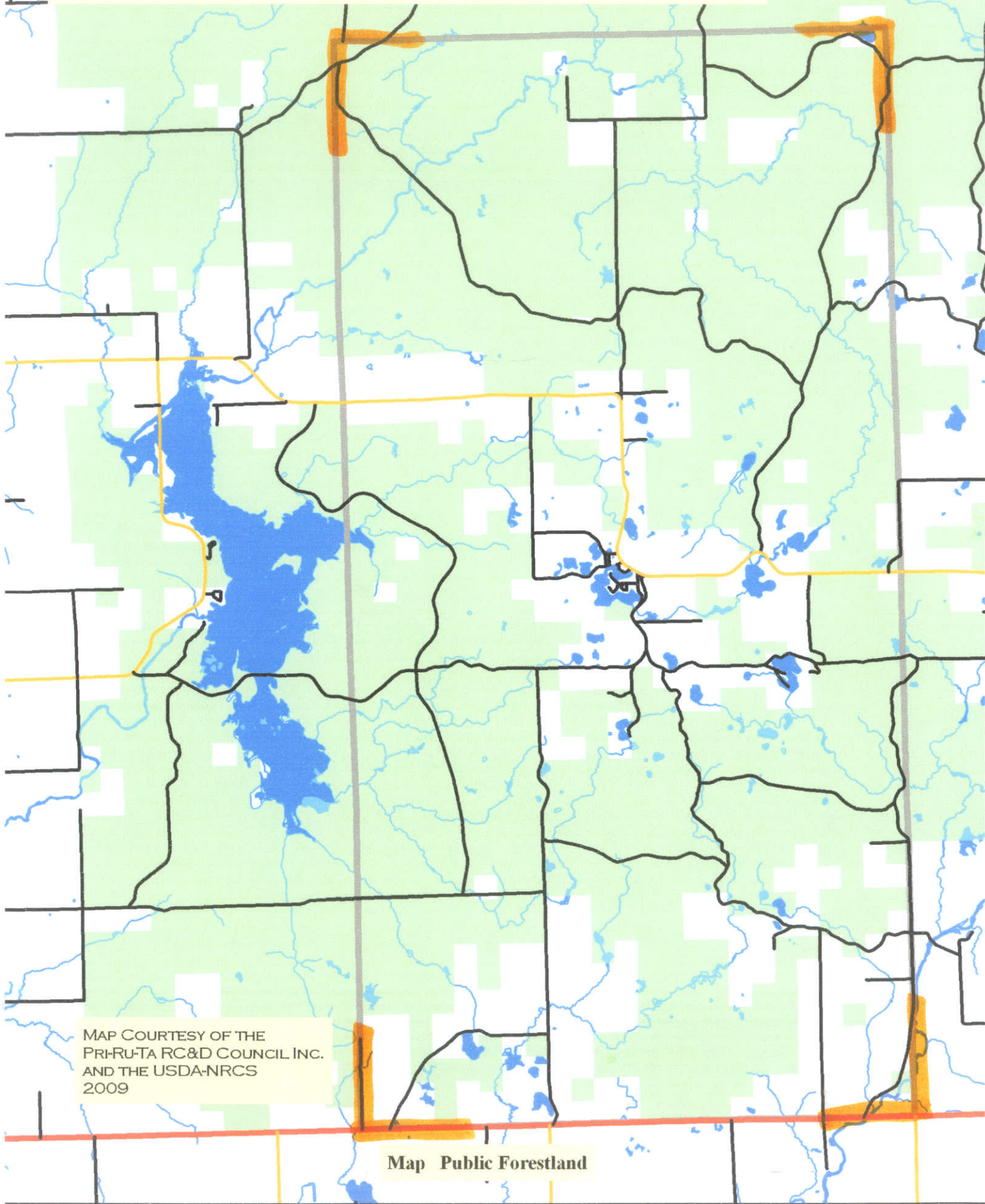
Roads

-  COUNTY
-  LOCAL
-  STATE

North Grover (T32N R2W)
South Grover (T31N R2W)



GROVER TOWNSHIP PUBLIC FORESTLAND



MAP COURTESY OF THE
PRI-RU-TA RC&D COUNCIL INC.
AND THE USDA-NRCS
2009

Map Public Forestland