

The majority of the educational attainment for the adult citizens of the town of Grover is high school graduates. 28 of the adult citizens have less than a 9th grade education, 9 have a 9th to 12th grade education with no diploma, 56 are high school graduates, (including equivalency), 47 have some college education but no degree, 9 have an associate's degree, 8 have a bachelor's degree, and 18 have a graduate or professional degree. See attached Grover-Educational Attainment chart for details.

EMPLOYMENT STATUS AND HOUSEHOLD INCOME

According to 2000 census information, the median income for a household in the town of Grover was \$38,125, and the median income for a family was \$42,500. Males had a median income of \$29,531 versus \$25,875 for females. The per capita income for the town was \$18,031. About 2.9% of families and 2.5% of the population were below the poverty line, including none of those under the age of eighteen and 11.1% of those sixty five or older. See attached Grover-Household Income chart for details.

In the year 2000, the town of Grover had 180 employable individuals over the age of 16. There was an employed civilian population of 108 and 72 individuals not in the labor force over the age of 16. There were 91 females in the labor force and two unemployed individuals. See attached Grover-Occupations chart for details. See attached Per Capita Income for Selected Municipalities With Comparison to Taylor County: 1990 and 1999 chart for details.

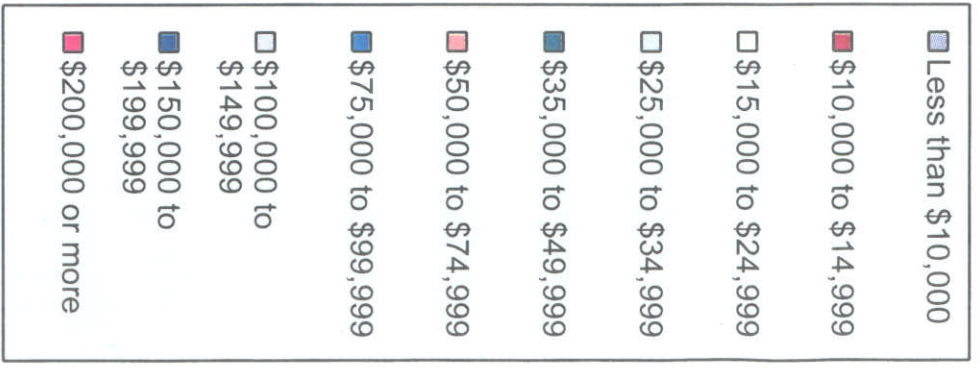
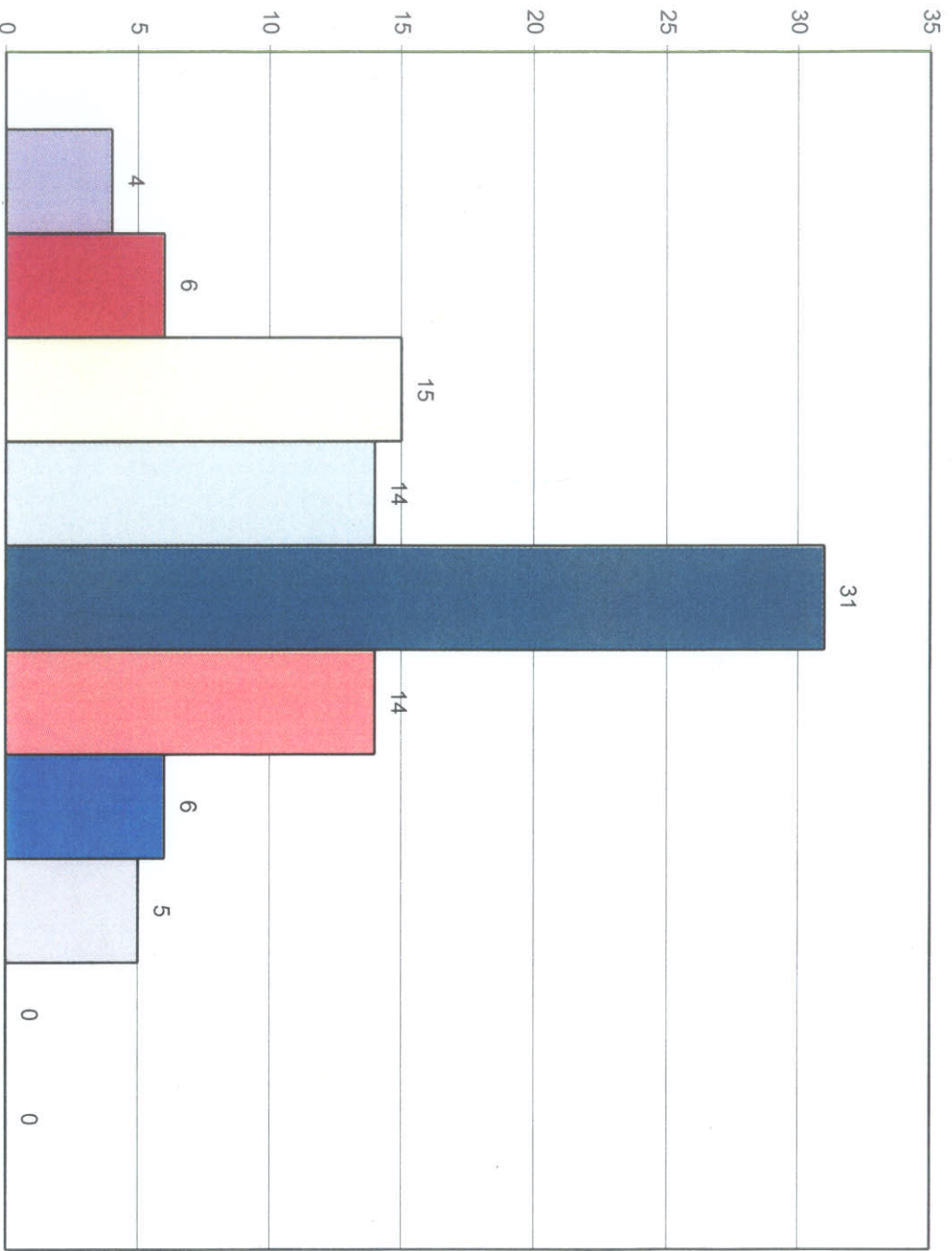
The majority of the employed workers residing in the town of Grover had occupations in production, transportation, and material moving. 31 workers were employed in this area. 20 workers were employed in the management, professional and related occupations area. 19 workers were employed in the sales and office occupations area. 18 workers were employed in the construction, extraction, and maintenance occupations area. 14 workers were employed in the service occupations area. 4 workers were employed in the farming, fishing and forestry occupations area.

HOUSING

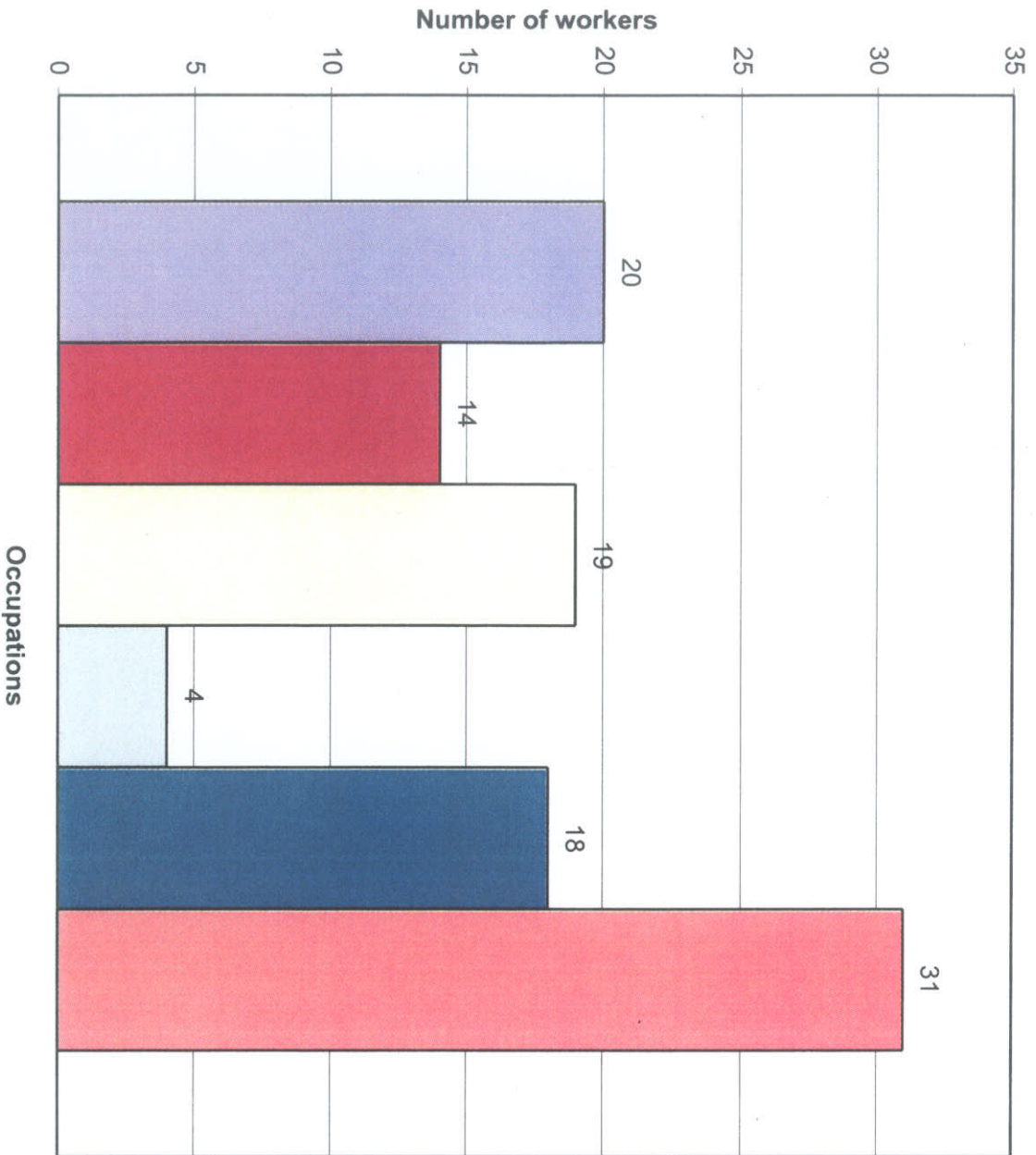
A household is a group of people residing in one unit. The town of Grover in 2000 had 136 units, consisting of 119 owner occupied housing units and 17 mobile home units. The average family size is 2.89. In 2000 there were 35 seasonal units. There were 25 housing units with individuals over 65 years of age. The majority of the homes in the town of Grover are occupant owned. There are some rental units in the town of Grover but no multiple housing units. The housing units are single family structures or mobile homes. See attached Grover-When Moved Into Unit chart for details on when the residences were moved into. See attached Housing Units for Selected Municipalities With Comparison to Taylor County chart for details.

According to the 2000 census information, of the 136 residences in the town of Grover, 19 were built in 1939 or earlier, 16 were built between 1940 and 1959, 21 were built between 1960 and 1969, 38 were built between 1970 and 1979, 25 were built between

Grover: Household Income



Grover: Occupations



- Management, professional, and related occupations
- Service occupations
- Sales and office occupations
- Farming, fishing, and forestry occupations
- Construction, extraction, and maintenance occupations
- Production, transportation, and material moving occupations

Per Capita Income For Selected Municipalities With Comparison To Taylor County: 1990 & 1999

